

FILL-RITE

Fuel & Oil Transfer Pumps

1200 Series 12-Volt DC Rotary Vane Pumps

This industry standard DC pump dispenses up to 15 GPM (57 LPM). The pump weighs less than 27 pounds (12.2kg), with hose and nozzle, and has a draw that's easy on the DC power source.



FR1210HA



FR1211H

- Explosion-Proof UL/CUL Listed 1/4 HP Motor with Permanent Magnet and Ball Bearings
- Heavy-Duty Switch, Thermal Overload Protection and Junction Box
- Heavy-Duty Battery Cable
- Iron Rotor
- Automatic Bypass Valve
- Built-In Strainer
- 12' (3.7M) Hose with Static Ground Wire
- 2" Threaded Base for Tank Openings
- Corrosion-Proof Adjustable Section Pipe
- Machined Carbon Vanes
- Meter Kit (FR1211H) Only Available with Manual Nozzle

4200 Series High Flow 12 VDC pumps

In a world where time is money, the FR4210 saves you both. Thanks to its high flow rate of 20 GPM (76 LPM) and low 22 Amp draw, you'll spend less time at the pump and more time accomplishing the task at hand.



FR4210H



Automatic Nozzle

FR4210HB

- Explosion-Proof UL/CUL Listed 1/4 HP Motor with Permanent Magnet and Ball Bearings
- Heavy-Duty Switch, Thermal Overload Protection and Junction Box
- Heavy-Duty Battery Cable
- Iron Rotor
- Automatic Bypass Valve
- Built-In Strainer
- 12' (3.7M) Hose with Static Ground Wire
- Manual Nozzle with Protective Nozzle Boot
- 2" Threaded Base for Tank Openings
- Corrosion-Proof Adjustable Section Pipe
- Machined Carbon Vanes

700 Series HD AC Utility Pump w/ Auto Nozzle

These rugged, positive displacement, economy pumps are UL/CUL listed and deliver flow rates up to 20 GPM (76 LPM).



FR710VB



FR711VA

- Explosion-Proof UL/CUL Listed 1/3 HP Motor (115 Vac-60Hz)
- Heavy-Duty Switch, Thermal Overload Protection and Junction Box
- Carbon Vanes and Ceramic/Carbon Seal Reduce wear and Repair Expense
- Integral Check Valve with Pressure Relief on Outlet Side Reduces Pressure Drop and Improves Vertical Lift
- Easy Removable Strainer
- 2" Threaded Base for Tank Openings
- Rain Proof
- No Foot Valve Required
- Automatic Bypass Valve



FILL-RITE



FR310VB



FR311VN

300 Series HD High Flow AC Pumps w/ Auto Nozzle

High Flow AC Utility Rotary Vane Pumps with a flow rate few pumps can match, these pumps provide long life and deliver up to 35 GPM (114 LPM).

- Explosion-Proof UL Listed Dual Voltage 3/4 HP Motor
- Motor has Sealed Bearings, Heavy-Duty Switch and Thermal Overload Protection
- Built-In Junction Box
- Cast Iron Pump Housing with Iron Rotor and Carbon Vanes
- Check Valve, Pressure Relief Valve and Strainer Assembly
- Automatic Bypass Valve
- 2" Threaded Bas for Tank Openings
- No Foot Valve Required
- UL/CUL Listed
- Rain Proof



110300-2

110300-2 DC Aluminum Gear Fuel Pump with Auto Nozzle

- 12-Volt DC - Rotary Gear. Explosion Proof Motor.
- Up to 18 GPM (68 LPM)
- 12 ft. (3.7m) x 1 in. Hose
- 2 Year Pump Warranty



170000-03

170000-03 GPRO V25-012AD 12v Fuel Transfer Pump with Automatic Nozzle

- 12-Volt DC - Carbon Vane 1620, 4/10 hp motor.
- Up to 25 GPM (94 LPM)
- 18 ft. (5.5m) x 1 in. Hose
- 5-Year Pump Warranty





Fuel Nozzles



Automatic Diesel Nozzle

1" NPT, for use with diesel fuel only. Designed for pumps with a minimum flow rate of 20 GPM.



906008-570

Automatic Unleaded Nozzle

3/4" NPT, straight spout for M-150S, M-180S, M-240S and M-1115S Series.



110121-8



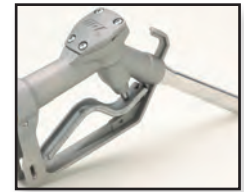
OPW 1291C Automatic Nozzle

1 1/2" NPT for heavy duty, high-flow truck, bus and home fuel oil delivery service.

1290-0050

Manual Nozzles

PART#	FITTING	SWIVEL
110155-1	3/4" NPT	Yes
110155-4	1" NPT	Yes
906001-506	3/4" NPT	No
906001-10	1" NPT	No



Mechanical Flow Meters

800 Series Flow Meters

Mechanical flow meters that provide precision and durability in a cost-effective design. The Series 800C meter's exclusive unicast component mounting configuration assures consistency, particularly in gravity flow applications. The 800C is accurate to within $\pm 1\%$.



FR807C

- Large, Easy to Read Register
- Flow Ports Can Be Positioned Vertically or Horizontally
- UL/CUL Listed
- Gallon or Liter Reading
- Handles Fluid of any Viscosity
- Strainer for Gravity-Flow Applications Traps Tank Contaminants

PART#	DESCRIPTION
FR807C	3/4" Flow Meter
FR807C1	1" Flow Meter
FR807CN1	1" Nickel Plated Flow Meter

900 Series Flow Meters

Flow Meters Series 900 operates at 6 to 40 GPM (23 to 151 LPM), with accuracy of $\pm 2\%$. The easy reset register indicates product use up to 999.9 gallons or 9,999 liters. The master totalizer registers up to 9,999,999 gallons.



FR901C

- Large, Easy To Read Numbers
- Measure Fluids at Temperatures up to 150°F and Pressures up to 50 PSI
- Quick Reset Knob
- Flexible Flow Ports can be Positioned Vertically or Horizontally

PART#	DESCRIPTION
FR901C	1" Flow Meter
FR901C1.5	1.5" Flow Meter
FR901CN1.5	1.5" Nickel Plated Flow Meter





Petroleum Fuel Filters

200 & 250 Series Spin-On Filters

- 18 GPM Maximum Flow
- 50 PSI Maximum Working Pressure
- Resin-Impregnated Cellulose Media
- Protects Equipment
- Removes Common Contaminants Such as Dirt, Dust, and Rust
- Ease of Installation with Standard Pre-Lubed Gaskets



PART #	CIMTEK	MICRON	UNF
70003	200E-10	10	3/4"
70005	200AE-10	10	1"
70819	250E-02	2	3/4"
70005	250AE-10	10	1 3/8"
70821	250AE-02	2	1 3/8"

300 Series Service Station Filters

- 25 GPM Maximum Flow
- 50 PSI Maximum Working Pressure
- MicroGlass Media Offers High
- Dirt-Holding Capacity
- Removes Particulate Contaminants Such as Dirt, Dust, and Rust
- Variety of Media for Different Operating Conditions
- Recognized by the Underwriter's Laboratory for Use with Service Station Pumps
- Cellulose/MicroGlass Media Offers Higher Efficiencies and Longer Life
- Standard Pre-Lubed Gaskets



PART #	CIMTEK	MICRON	UNF
70806	300-02	2	1"
70010	300-10	10	1"
70012	300-30	30	1"

800 Series High Volume Commercial Filters

- 40 GPM Maximum Flow
- 50 PSI Maximum Working Pressure
- Variety of Media for Different Operating Conditions
- Increased Flow Capacity and Extended Life
- Standard Pre-Lubed Gaskets
- Extended Length Provides Higher Dirt-Holding Capacity
- Removes Common Particulate Contaminants at High Flow Rates



PART #	CIMTEK	MICRON	UNF
70019	800-10	10	1 1/2"
70814	800-02	2	1 1/2"

GPI FILTERS

- 18 GPM Maximum Flow
- 50 PSI Maximum Working Pressure
- Spin-on design and pre-lubed gaskets makes filter changes easy
- Filters include draincock
- For use with gasoline, E15, kerosene, diesel, and biodiesel.



PART#	MICRON	UNF
129340-01	10	1 3/8"
129340-02	10	1"



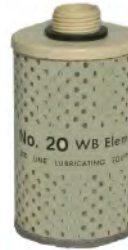
Fuel Accessories

Fuel Filter Housings



PART#	FITS	MATERIAL	SIZE
50003	200H	Cast Iron	3/4"
50004	200AH	Cast Iron	1"
50109	800	Aluminum	1"

Fuel Filter Cartridges



**Water-Separating
NS-10 Filter Element
20WB**



**10 Micron
30002
2 Micron
30065**

OPW Two-Plane Hose Swivels



- Customer convenience
- Two-plane rotation
- Compact, attractive profile
- Secure design
- Dual seals
- 50 PSI maximum pressure.
- Special swivel outlet design

3/4"
241TPS-0241
or
115400-02

1"
45-5075
or
115400-04

Fuel Caps



FR901C

- Allows up to 30 GPM fluid removal
- Pressure Cap Valve Opens at 2.5 lbs to Reduce Pressure
- Vacuum Release Opens at 1.5 Oz. When the Tank Closes



21001C

- Cast iron vented fill cap
- Larger vent holes ideal for higher flow
- Lockable



Fuel Transfer Hose & Fittings

Fuel Hose

- For discharge of gasoline, kerosens, diesel fuels, and petroleum oils from electric pumps to field agricultural equipment.
- Static wire prevents static electricity buildup for safe operation
- Perfect For use with AC or DC electric pumps
- Backed by a 90-day limited manufacturer's warranty
- Made in the U.S.A. from globally sourced components



PART#	SIZE	LENGTH	SPRING SUPPORT
110523-1	3/4"	12'	NO
110529-01	3/4"	14'	YES
141201-507	3/4"	18'	NO
110049-507	3/4"	20'	YES
121036-1	1"	12'	NO
110529-03	1"	14'	YES
133262-05	1"	20'	NO

Black Merchant Fuel Fittings

Bell Reducer



PART#	SIZE
0122-1612	1" x 3/4"

Union Coupling



PART#	SIZE
0140-12	3/4"

90 Degree Street Elbows



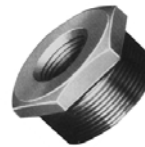
PART#	SIZE
0107-16	3/4"
0107-12	1"

Straight Couplings



PART#	SIZE
0119-12	3/4"
0119-16	1"

Schedule 40 Hex Bushings



PART#	SIZE
0128-1612	1" x 3/4"
0128-2416	1 1/2" x 1"

Schedule 40 Close Nipples



PART#	SIZE
4376-1201	3/4"
4376-1601	1"

Safety Items



PART#	DESCRIPTION
64056101	Hot Orange Fuel Gloves

UNLEADED
GASOLINE

PART#	DESCRIPTION
5A-V51-C	Unleaded Gas

OFF ROAD
ULTRA LOW SULFUR DIESEL

PART#	DESCRIPTION
DEC-CV-200	Off-Road Ultra Low Sulfur Diesel





**Dura DEF Products
2 Year Warranty**

DURA DEF Portable Tote

- Easy Caddy Pumping System
- Top or Bottom Suction
- 135 Gallon DEF Tote
- 12 Volt DC Motor or 110 Volt AC Motor
- 6" Dual Bung Lid
- Micro Matic RPV Valve
- 20' Def Hose
- Choice of Nozzle
- Meter Optional



Top Suction

PART#	NOZZLE	MOTOR
DEFE-2512ME-135	Manual	12V
DEFE-2515ME-135	Manual	110V
DEFE-2512AE-135	Auto	12V
DEFE-2515AE-135	Auto	110V



Bottom Suction

PART#	NOZZLE	MOTOR
DEFE-2012ME-135	Manual	12V
DEFE-2015ME-135	Manual	110V
DEFE-2012AE-135	Auto	12V
DEFE-2015AE-135	Auto	110V

DEF Dispersion System



2" NPT Bung

PART#	NOZZLE	MOTOR
DEFT-2012ME	Manual	12V
DEFT-2015ME	Manual	110V
DEFT-2012AE	Auto	12V
DEFT-2015AE	Auto	110V

- No Meter
- 20' Def Hose
- All Clamps and Fittings

- Telescoping Down Tube
- Micro Matic RSV Coupler-Optional

RSV Type Valve

PART#	NOZZLE	MOTOR
DEFT-2412ME	Manual	12V
DEFT-2415ME	Manual	110V
DEFT-2412AE	Auto	12V
DEFT-2415AE	Auto	110V



DEF 3/4"

Automatic Nozzle

Viton seals, 3/4" NPT thread with a swivel and a straight spout. Designed to transfer diesel exhaust fluid (Urea) fuels.



906006-83

LP-50 Hand Pump

- Lever
- Up to 1 Pint per Stroke
- 2 in. NPT Tank Fitting
- 90 Day Warranty



129000-1

