



Hydraulic Centrifugal Pumps

Centrifugal pump design provides good resistance to abrasive solutions and extra flow for agitation. All hydraulic driven pumps are equipped with a stainless steel shaft and wear ring for excellent corrosion resistance. The Ace gear type hydraulic motor is more efficient than gerotor type motors, and is less subject to damage by contamination than the gerotor design. A built-in needle valve allows for the bypass of up to 9 GPM (34 LPM) excess hydraulic fluid on open center systems. The standard motor has a reverse flow check valve which prevents backward hookup and a coasting check which protects the motor seal from the flywheel effect of the impeller. A restrictor orifice is included with pump models recommended for pressure compensating closed center systems.

MOUNTING VERSATILITY: The pump can be mounted in a variety of locations to suit application requirements.

CUSTOMIZED PERFORMANCE: The performance is dependent on the supply of hydraulic oil to the motor and not necessarily tied to engine speed.

EASY MAINTENANCE: Separate pump and hydraulic motor shafts simplify repair and replacement. Two main pump bearings support shaft loads. All pumps are equipped with easily replaceable Viton mechanical seals.



PWM & E-Coated Pumps



FMC-HYD

SERIES	SUCTION	DISCH.	MAX GPM	MAX PSI
FMC-75-HYD-*	1"	3/4"	25/27	100
FMC-75SP-HYD-*	1"	3/4"	25/27	100
FMC-HYD-*	1 1/4"	1"	70/80/85/100/100	100/100/100/120/120
FMC-125-HYD-*	1 1/4"	1"	92	120
FMC-150SP-HYD-*	1 1/2"	1 1/4"	130	120
FMC-150-HYD-*			135	120
FMC-150F-HYD*	1 1/2" 220 flange	1 1/4" 200 flange	145/155	120/130
FMC-155F-HYD-*			145	120
FMC-200-HYD-*	2"	1 1/2"	200	80/120/120
FMC-200F-HYD-*	300 flange	220 flange	240	120
FMCSC-205F-HYD-*			240	120





Belt Driven Centrifugal Pumps

Ace belt driven pumps are available in a variety of models which can be belt driven or direct coupled to a power source. The pumps are available in either clockwise or counterclockwise rotation. The standard bare shaft pumps are designed with a keyway for mounting a drive pulley or coupling.

- Rotation determined when facing shaft end
- Stainless steel shaft and wear ring
- Chemical resistant Valox® or optional cast iron or 316 stainless steel impeller
- Standard Viton® carbon/ceramic seal or optional severe duty silicon carbide mechanical seal
- X-frame pumps have 3/4" stainless steel shaft (instead of standard 5/8") and larger bearings for extended life
- MAG-D models equipped with heavy duty 12V clutch



FMC-CW

Counterclockwise Rotation

SERIES	SUCTION	DISCH.	MAX GPM	MAX PSI	Max HP	PUMP OPTIONS	DRIVE OPTIONS
FMC	1 1/4"	1"	70	170	4.2	SC, CI, BSP	MAG-D,
FMC-150	1 1/2"	1 1/4"	130	130	10	SC, CI, PI, BSP	MAG-D
FMC-150F	1 1/2" 220 flange	1 1/4" 200 flange	130	130	10	SC, CI, PI, SS	-
FMC-150SP	1 1/2"	1 1/4"	130	130	10	SC, CI, PI	MAG-D
FMC-650			140	160	22	SC, SI	MAG-D
FMC-650F	1 1/2" 220 flange	1 1/4" 200 flange	140	160	22	SC, SI, SS, WS	MAG-D
FMC-200	2"	1 1/2"	200	120	7.5	SC, CI, SI, SS	MAG-D, X
FMC-200F	300 flange	220 flange	200	120	7.5	SC, CI, SI, SS	MAG-D, X

Clockwise Rotation

SERIES	SUCTION	DISCH.	MAX GPM	MAX PSI	Max HP	PUMP OPTIONS	DRIVE OPTIONS
FMC-CW-75	1"	3/4"	27	100	-	SC	-
FMC-CW	1 1/4"	1"	70	170	4.2	SC, CI, BSP	MAG-D
FMC-CW-150	1 1/2"	1 1/4"	80	120	4.7	SC, CI, BSP	MAG-D, X
FMC-CW-650			140	160	22	SC, SI, BSP, WS	MAG-D
FMC-CW-200	2"	1 1/2"	200	120	7.5	SC, CI, BSP	MAG-D, X
FMC-CW-800			180	170	14.2	SC	MAG-D

SC = Severe Duty Silicone Carbide Shaft Seal
SI = 316 Stainless Steel Impeller

CI = Cast Iron Impeller
BSP = British Standard Pipe Thread

PI = Polypropylene Impeller
WS = Oasis Wet Seal

SS = 316 Stainless Steel Pump





Centrifugal pump design provides good resistance to abrasive solutions and extra flow for agitation. Ace PTO belt driven centrifugal pumps are able to mount directly on 540 RPM and 1000 RPM tractor PTO shafts. The spring loaded idler maintains proper belt tension which minimizes the load on the pump bearings and helps absorb the shock of PTO engagement that can destroy cog belts or gears.

- Spring loaded idler
- Sealed ball bearings
- Belt guard completely covers pulleys, shaft, and belt
- Stainless steel shaft and wear ring



PTOC-1000

PTO Shaft Options

-6SP



Standard 1-3/8" (34.9mm) 6 spline shaft for 540 RPM PTO Models

-6SPQC



Optional instant-attach quick coupler feature for 540 RPM PTO models

-21SP



Standard 21 spline 1-3/8" (34.9mm) split bore shaft with locking collar for 1000 RPM PTO models

-20SP



20 spline 1-3/4" (44.5mm) split bore shaft with locking collar for larger 1000 RPM PTO Models

-B



1" (25.4mm) stub shaft for installation on trailer sprayers driven by PTO tumblerod

SERIES	SUCTION	DISCH.	MAX GPM	MAX PSI	PUMP OPTIONS
PTOC-*	1 1/4"	1"	65	80	SC, CI, BSP
PTOC-150-*	1 1/2"	1 1/4"	100	110	SC, CI, PI, BSP
PTOC-150F-*	220 flange 1 1/2"	200 flange 1 1/4"	100	110	SC, CI, PI, BSP

*600 or 1000 depending on tractor PTO shaft speed

SC = Severe Duty Silicone Carbide Shaft Seal

CI = Cast Iron Impeller

PI = Polypropylene Impeller

BSP = British Standard Pipe Thread





Ace offers a complete line of Gasoline Engine Driven Centrifugal Pumps. The pumps provide service where power sources are limited or unavailable. The pumps are ideally suited to develop pressure for spray or transfer applications.

The pumps feature a direct coupled design with an easily replaceable mechanical seal and slinger ring between pump and engine to prevent liquid from damaging the engine.

The pumps are available complete or less engine (-LE). Complete units come assembled on the specified engine ready to install and run. Less engine (-LE) units come with all hardware necessary to mount on the specified engine.

Optional E-Coat finish (-EC) provides extra corrosion resistance on all surfaces inside and out (GE-660 only).



GE-660

SERIES	SUCTION	DISCH.	MAX GPM	MAX PSI	SHAFT	PUMP (-LE) HP RANGE	PUMP & ENGINE ASSEMBLY	OPTIONS
GE-75	1"	1 1/4"	25	70	5/8" keyed	2.8	2.8 HP Honda	SC
GE-85			24	65	3/4" keyed	4 or 5	-	SC
GE-100-A	1 1/4"	1"	50	50	5/8" NF thread	3 - 5.5	3.5 HP Briggs & Stratton	-
GE-650	1 1/2"	1 1/4"	110	120	5/8" NF thread	5.5	-	-
GE-660					3/4" keyed		5.5 HP Briggs & Stratton 4.8 HP Honda	SC, ES, EC
GE-800	2"	1 1/2"	140	140	1"-14 NF thread	8 - 10	-	SC
GE-860					1" keyed		7.9 HP Honda	SC, ES
GE-1600	2 1/2"	2"	280	120	1"-14 NF thread	16 - 20	16 HP Electric Start Vanguard*	SC

*Engine less fuel tank

SC = Severe Duty Silicone Carbide Shaft Seal

EC = E-Coat finish

John Deere 6000 Replacement Pump

P/N: AN152866



Fits John Deere Models 210 Integral Sprayer s/n 500-, 220 Integral Sprayer s/n 3731-, 250 Spracart Pull-Type Sprayer, 320 Skid-Mounted Sprayer from 1980-, 335 Skid-Mounted Sprayer from 1980-, 520 Pull-Type Sprayer from 1980-, 535 Pull-Type Sprayer from 1980-, 550 Pull-Type Sprayer from 1980-, 6000 Hi-Cycle Sprayer s/n 2251-.





2" Gas Engine Driven Centrifugal Pumps

2" John Blue Poly Wet Seal

- Wet seal technology creates longer lasting seal and can be ran dry without causing failure.
- Polypropylene Body, FKM and Viton Seals, 316SS Impeller Shaft allows for excellent chemical resistance
- Pump can be removed from engine for engine repairs/replacements without disassembling the pump
- 1" FPT pressure access & 1/2" FPT drain port

PART#	DESCRIPTION
PSP-3240-G6H	2" Poly Wet Seal Pump w/ 6.5HP Honda
PSP-3240-G6HFLG	2" Poly Wet Seal Flange Pump w/ 6.5HP Honda
PSP-3240	Replacement Pump
116403-91	Seal Kit
116285-91	Replacement Impeller



2" John Blue Cast Wet Seal

- Wet seal technology creates longer lasting seals and can be ran dry without causing damage and failure.
- Extra thick cast walls provide extra strength and extend the life of the pump due to abrasion and corrosion.
- Closed impeller design minimizes thrust loading on the motor, extending the life of the motor and increasing the performance of the impeller as it wears.

PART#	DESCRIPTION
SP-3240-G5H	2" Cast Wet Seal Pump w/ 5HP Honda
SP-3240-G5HFLG	2" Cast Wet Seal Flange Pump w/ 5HP Honda
SP-3240	Replacement Pump
116249	Seal Kit
102041-A	Replacement Impeller



2" Pacer Poly

- Glass reinforced polyester with carrying handle
- 316 stainless steel internal and external fasteners
- EPDM O-rings, gasket, & check valve
- Viton options available



- Fast suction lifts up to 25'
- Electric start option available on select models
- 1 Year warranty

PART#	DESCRIPTION
SE2UL E5HCP	2" Poly Pacer S Series Pump w/ GX160 Honda
SE2UL E6HCP	2" Poly Pacer S Series Pump w/ GX200 Honda
SE2UL E6HCP/ES	2" Poly Pacer S Series Pump w/ GX200 Honda
SE2UL E6VCP	2" Poly Pacer S Series Pump w/ B&S Vanguard
SE2UL E6VCP/ES	2" Poly Pacer S Series Pump w/ B&S Vanguard
SEB2PL E5.5	2" Poly Pacer S Series Pump w/ LCT 208CC
SE2UL E179	2" Poly Pacer S Series Pump w/ 179CC LCT
SE2UL CX223	2" Poly Pacer S Series Pump w/ LCT CX223 PRO
SE2UL-PEO	Replacement Pump

Pacer Pump Rebuild Kits

4 Vane Kit

Part #	Fits Models	Impeller
P-58-702EP-P	SEB2PL, SE2PL, SE11/2AL, & SE2FL	3 Vane
P-58-702EP-U	SEB2UL, SE2UL, SE2CL, SE2IL, SE3NL, & SE3XL	5 Vane
P-58-977EP-RS	SE3SL, SE3LL, SE3ZL, SE2JL, & SE2RL	4 Vane

More rebuild kit options available
Individual components available

P-58-0714 12
EPDM SHAFT MECH SEAL

P-58-0719 72
EPDM MAIN BODY ORING





3" Gas Engine Driven Centrifugal Pumps



3" John Blue Cast Wet Seal

- Double Wet Seal design allows the pump to be ran dry for long periods of time.
- Extra thick cast walls provide extra strength and extend the life of the pump due to abrasion and corrosion.
- Closed impeller design extends the life of the motor and impeller wear increases performance of pump.



3" John Blue Poly Wet Seal

- Double Wet Seal design allows the pump to be ran dry with no harm to the pump.
- Chemical resistant materials
- Closed Impeller Technology creates better pump efficiency over time as impeller wears.
- Easy to carry handle allows for easy installation for discharge elbow as well.

PART#	DESCRIPTION
SP-3350-G13H	3" Cast Iron Wet Seal Pump w/ 13HP Honda
SP-3350-G13HFLG	3" Cast Iron Wet Seal Pump Flange Connection w/ 13HP Honda
SP-3350-G14K	3" Cast Iron Wet Seal Pump w/ 14HP Kohler
SP-3350-G14KFLG	3" Cast Iron Wet Seal Pump Flange Connection w/ 14HP Kohler
SP-3350-G14V	3" Cast Iron Wet Seal Pump w/ 14HP Vanguard
SP-3350-G14VFLG	3" Cast Iron Wet Seal Pump Flange Connection w/ 14HP Vanguard
SP-3350-BS	Replacement Pump
116248	Seal Kit
116227-01	Replacement Impeller

****2 Year Unconditional Warranty on Cast Iron Pumps**

PART#	DESCRIPTION
PSP-3340-G13H	3" Poly Wet Seal Pump w/ 13HP Honda
PSP-3340-G13HFLG	3" Poly Wet Seal Pump Flange Connection w/ 13HP Honda
PSP-3340-G14K	3" Poly Wet Seal Pump w/ 14HP Kohler
PSP-3340-G14KFLG	3" Poly Wet Seal Pump Flange Connection w/ 14HP Kohler
PSP-3340-G14V	3" Poly Wet Seal Pump w/ 14HP Vanguard
PSP-3340-G14VFLG	3" Poly Wet Seal Pump Flange Connection w/ 14HP Vanguard
PSP-3340-BS	Replacement Pump
43005	Mechanical Seal
116427-91	Replacement Impeller

3" Pacer Poly



- Glass reinforced polyester with carrying handle
- 316 stainless steel internal and external fasteners
- EPDM O-rings, gasket, & check valve
- Viton options available
- Fast suction lifts up to 25'
- Electric start option available on select models
- 1 Year warranty

PART#	DESCRIPTION
SE3SL E6HCP	3" Poly Pacer S Series Pump w/ Honda GX200
SE3SL E6HCP/ES	3" Poly Pacer S Series Pump w/ Honda GX200 Electric Start
SE3SL E6VCP/ES	3" Poly Pacer S Series Pump w/ B&S Vanguard Electric Start
SE3SL E5.5	3" Poly Pacer S Series Pump w/ LCT 208CC
SE3SL CX223	3" Poly Pacer S Series Pump w/ LCT CX223 PRO
SE3SL-PEO	Replacement Pump

****Rebuild kits located on page prior**





Centrifugal Pumps (Pump Only)



VENDOR	PART#	MATERIAL	SIZE	MAX GPM	MAX PSI	SHAFT	SEAL
John Blue	PSP-3240	Poly	2"	200	45	3/4"	Double Wet Seal
Banjo	205PO	Poly	2"	200	50	3/4"	Dry Seal
Pacer	SE2UL-PEO	Poly	2"	200	50	3/4"	Dry Seal
John Blue	SP-3240	Cast	2"	152	42	3/4"	Double Wet Seal
Banjo	200POI	Cast	2"	190	45	3/4"	Dry Seal
John Blue	PSP-3340-BS	Poly	3"	375	45	1" & 1-1/8"	Double Wet Seal
Banjo	300PO	Poly	3"	293	35	3/4"	Dry Seal
Pacer	SE3SL-PEO	Poly	3"	280	50	3/4"	Dry Seal
John Blue	SP-3350-BS	Cast	3"	400	64	1"	Double Wet Seal
Banjo	300POI	Cast	3"	340	50	1"	Dry Seal
Banjo	301POIW	Cast	3"	350	62	1"	Wet Seal

Bearing Pedestal Centrifugal Pumps



VENDOR	PART#	MATERIAL	SIZE	MAX GPM	MAX PSI	SHAFT	SEAL
Banjo	200PBI	Cast	2"	190	45	3/4"	Dry Seal
Banjo	201PBIW	Cast	2"	190	45	3/4"	Wet Seal
John Blue	SP-3240-P	Cast	2"	152	42	3/4"	Double Wet Seal
Banjo	300PBI	Cast	3"	340	50	1"	Dry Seal
John Blue	SP-3340-P	Cast	3"	340	64	1-1/8"	Double Wet Seal





Electric Motor Driven Centrifugal Pumps



VENDOR	PART#	MATERIAL	SIZE	MAX GPM	MAX PSI	MOTOR	SEAL
Banjo	234PIE51	Cast	2" FPT	190	45	5.0 HP Single Phase	Dry Seal
Banjo	234PPE51	Poly	2" FPT	216	52	5.0 HP Single Phase	Dry Seal
Pacer	SE2JL C5.0C	Poly	2" FPT	260		5.0 HP Single Phase	Dry Seal
John Blue	SP-3240-E5T3B	Cast	2" FPT	152	42	5.0 HP Three Phase	Wet Seal
Pacer	SE3LL C5.0C	Poly	3" FPT	280		5.0 HP Single Phase	Dry Seal
John Blue	SP-3340-E10TB-1	Cast	3" FPT	340	64	10 HP Single Phase	Wet Seal
Banjo	M332PIE101W	Cast	3" Flange	360	46	10 HP Single Phase	Wet Seal
Banjo	M332PIE10W	Cast	3" Flange	360	46	10 HP Three Phase	Wet Seal





CDS-John Blue Pumps

Variable Rate & Direct Hydraulic Drive Kits

Apply your liquid fertilizer with the best pump for the job while doing it easily with your hydraulic system. You don't need to buy new equipment to benefit from Variable Rate Technology. A great feature of the CDS-John Blue Piston Pump, with the Variable Rate Hydraulic Drive Kit (VRH), is that you can use it on your current equipment - planters, drills, strip tills and liquid applicators. Regardless if your pump is 40 years old or new, the VRH Kits will mount to your pump (LF, L, LM and NGP series piston pumps). You can have tomorrow's technology today.

CDS-John Blue now offers a lower cost, more compact solution for variable rate piston pump drives. We have recently introduced a Direct Hydraulic Drive for Piston Pumps. Growers can supply their own SAE A 2-bolt motor or a hydraulic motor/PWM manifold kit is available from CDS-John Blue Company. These Direct Hydraulic Drives are available for single and double piston pumps.

We have bar mount kits and direct drive kits to fit most common configurations. Our JD series fits **John Deere**® and the PWM (pulse width modulation) series is for **Raven**®, **Ag Leader**®, **Dickey-John**®, plus others, and can be used for variable rate and sectional shut-off as desired. The MAN (manual) series lets you use your tractors' hydraulics for a simple hydraulic driven system.

Variable Rate Hydraulic Drive Kit Features:

- Base Kit to add variable rate capacity to a CDS-John Blue Piston Pump for your planter or applicator. Other required off-the-shelf components to complete the kit are detailed in the instructions.
- Existing pumps can be easily converted to variable rate and sectional shut-off.
- A piston pump allows for quick and stable adjustment to application rates within a fraction of a second using this technology.
- With a piston pump your application rates will not change with the temperature or lack of head pressure.
- Sturdy mounting bracket attaches to the side or top of the machine's bar.
- Two types of flow control valves (servo or PWM) are available based on the kit you select.
- Hydraulic 2-way bypass valve turns pump and liquid flow on and off.
- Hydraulic motor requires 10 GPM to run the piston pump at maximum rpm, but the system can be used at lower GPM as the specific application allows.
- The manual speed drive system allows you to mount your pump anywhere on the machine and set the pump at a constant speed.
- The manual speed drive can also be used with other brands of hydraulic flow control valves in order to interface with controllers that are not listed below.
- "Bracket only kits" allow the use of the **Precision Planting**® motor, **Dickey-John** motor and **others**.

Direct Hydraulic Drive Piston Pump Features

- Lower cost and more compact solution for variable rate piston pump drives.
- Users can supply their own SAE A 2-bolt motor or a hydraulic motor/PWM manifold kit is available from CDS-John Blue Company, model number 116205-91.
- Available for the following piston pumps: NGP-4055-HYF, NGP-6055-HY, NGP-6055-HYF, NGP-7055-HY and NGP-7055-HYF.





CDS-John Blue Pumps

Piston Pumps

Single Piston-Double Acting

NGP-4055-F**NGP-6050****NGP-7050**

PUMP	GPM	RATED PRESSURE	SPEED	INLET & OUTLET	DISCONTINUED EQUIVALENT
NGP-4055-F	10.2	120	450 RPM	1" FPT & 200 FLANGE	LM-1255 SERIES
NGP-6055	21	120	450 RPM	1 1/2" FPT	LM-2450 SERIES
NGP-7055	34.2	120	450 RPM	1 1/2" FPT	LM-4450 SERIES

Double Piston-Double Acting

NGP-5055-DRF**NGP-8050****NGP-9050**

PUMP	GPM	RATED PRESSURE	SPEED	INLET & OUTLET	DISCONTINUED EQUIVALENT
NGP-5055-DRF	20.4	120	450 RPM	1" FPT & 200 FLANGE	-
NGP-8055	42	120	450 RPM	1 1/2" FPT	-
NGP-9055	68.4	120	450 RPM	1 1/2" FPT	LM-4950 SERIES

Dual Rate Ground Drive Piston Pumps

NGP-5655-ARF**NGP-8055-AR****NGP-9055-AR**

PUMP	STROKE	GPM	RATED PRESSURE	SPEED	INLET & OUTLET
NGP-5655-ARF	VARIABLE	31.2 TOTAL, 10.2 SMALL SIDE, 21 LARGE SIDE	120	450 RPM	1" FPT, 200 FLANGE SMALL SIDE & 1 1/2" FPT, 220 FLANGE LARGE SIDE
NGP-8055-AR	VARIABLE	42 TOTAL, 21 PER SIDE	120	450 RPM	1 1/2" FPT
NGP-9055-AR	VARIABLE	68.4 TOTAL, 34.2 PER SIDE	120	450 RPM	1 1/2" FPT





Ground Drive Parts & Accessories

Sprockets & Roller Chain

Sprockets for Pumps without Clutch

114516-01	12 Tooth Sprocket - RC 40, 1" Bore
113905-01	18 Tooth Sprocket - RC 40, 1" Bore
115156-01	18 Tooth Sprocket - RC 40, 7/8" Hex
114517-01	23 Tooth Sprocket - RC 40, 1" Bore
114932-01	32 Tooth Sprocket - RC 40, 1" Bore
114936-91	32 Tooth Sprocket - RC 40 Split for 7/8" Hex
114565-91	35 Tooth Sprocket - RC 40 Split for 7/8" Hex
113611-01	11 Tooth Sprocket - RC 50, 1" Bore
114677-01	14 Tooth Sprocket - RC 50, 1" Bore
113685-01	16 Tooth Sprocket - RC 50, 1" Bore
106532-01	18 Tooth Sprocket - RC 50, 1" Bore
115157-01	18 Tooth Sprocket - RC 50, 7/8" Hex
112773	24 Tooth Sprocket - RC 50, 1" Bore
105482-01	32 Tooth Sprocket - RC 50, 1" Bore
112774	36 Tooth Sprocket - RC 50, 1" Bore



PART#	DESCRIPTION
R40SS	#40 Roller Chain SS
673-CL40SS	#40 Connecting Link SS
673-HL40SS	#40 Offset Link SS
R50SS	#50 Roller Chain SS
50CLSS	#50 Connecting Link SS
50OLSS	#50 Offset Link SS
673-R60SS	#60 Roller Chain SS
60CLSS	#60 Connecting Link SS
60OLSS	#60 Offset Link SS
R2050SS	#2050 Roller Chain SS
673-CL2050SS	#2050 Connecting Link SS
673-HL2050SS	#2050 Offset Link SS



Calculate your pump and sprockets!
Scan the QR code to the left for a
step-by-step calculator!

Ground Drive Units



DRV-3000

- Ground Drive with pump mount
- Fixed-height adjustment mechanism (10 positions)
- Less tire and u-bolts



DRV-3100

- Gauge Wheel only
- Fixed-height adjustment mechanism (10 positions)
- Less tire and u-bolts



DRV-3200

- Universal Mount - Pump mount and jackshaft
- For planter hex shaft drive applications
- Less u-bolts



DRV-3300

- Ground Drive with pump mount
- Spring-loaded adjustment mechanism
- Less tire and u-bolts



Dura-Meter & Pumps with Accessories

Dura-Meter™



- Impact resistant Lexan faceplate
- 100% moisture-sealed circuitry
- Menu driven backlit display
- Plumbed for straight & 90° applications
- Quick List reference chart
- Easy calibration
- Extended battery life; 4 "AAA" batteries

DP-3000*

*E=EPDM, V=Viton, S=Silicone

SPECIFICATIONS

Operating Temp	-10°F to 130°F
Flow Rate	2 - 22 GPM
Accuracy	± .5%
Maximum Pressure	40 PSI
Backlit Display	Yes

Dura-Pump™



- Self priming diaphragm pump with internal bypass
- Motor thermally protected from overheating
- 30 minute duty cycle
- Suction port has 2" MPT and 1" FPT
- Outlet has 1" FPT
- Easily field serviceable
- Able to handle low & high viscosity liquids

DP-4012* 12 volt **DP-4015*** 110 volt
 *E=EPDM, V=Viton, S=Silicone

SPECIFICATIONS

Max Flow	15 GPM
Max Pressure	22 PSI
Amps	12V=18.5 110V=2.0
Power Cord	12V=20ft 110V=6.5ft
Verticle Suction Lift	Self-priming to 10ft

Quick Caddy



- Premium highly portable system with built-in carry handle and rugged frame
- For use in multiple mounting applications on top of tote and ground applications
- Includes: Dura-Pump™, 1" x 5' suction hose, 1" x 12' discharge hose, hosebarbs, clamps, 2" camlock, ball valve nozzle, and optional Dura-Meter™

With Meter

DPQM-4312* 12 volt

DPQM-4315* 110 volt

Without Meter

DPQ-4012* 12 volt

DPQ-4015* 110 volt

*E=EPDM, V=Viton, S=Silicone

Easy Caddy



- Can be mounted in 6 different configurations on a variety of tank/tote and drum types
- For use on top or side of tank or on ground
- Includes: Dura-Pump™, 1" x 5' suction hose, 1" x 12' discharge hose, hosebarbs, clamps, 2" camlock, reducer, nipple, ball valve nozzle, and optional Dura-Meter™

With Meter

DPEM-4312* 12 volt

DPEM-4315* 110 volt

Without Meter

DPE-4012* 12 volt

DPE-4015* 110 volt

*E=EPDM, V=Viton, S=Silicone





Dura-ABS™ Auto Batch System



METER ONLY DPAB-12V



How It Works

- 1 Select the volume desired
- 2 Press START
- 3 The pump will begin to inject fluid then automatically shut off upon completion

- Lowest cost automated sprayer filling system
- Filling your sprayer has never been easier or faster
- Reduces operator error and herbicide exposure
- Provides recirculation, maximizing chemical performance
- Accurately dispenses repeatable batches
- Eliminates cross contamination

Specialty Systems Available



Monsanto Tanks



Snyder/Gem Cap Tanks



N-Serve

Dura Products 2 Year Warranty

Covered Under Warranty

- Pump is no longer pumping
- Pump is leaking even when chemical compatibility has been met
- Workmanship defects or failures
- Meter electrical failure or moisture ingress

Not Covered Under Warranty

- Broken meters or displays
- Cracked or broken housings
- Cartridge or seal failure due to chemical incompatibility
- Misuse or abuse



Cartridge w/ O-Ring & Bottom Gasket

DP-G4001A-E (EPDM)
DP-G4001A-V (Viton)
DP-G4001A-S (Silicone)



Cartridge w/ O-Ring & Bottom Gasket

DP-P4017A-E (EPDM)
DP-P4017A-V (Viton)
DP-P4017A-S (Silicone)



AG Chemical Meter
Face Plate
DP-MFP01



Meter Body
DP-PMB3000E (EPDM)
DP-PMB3000V (Viton)
DP-PMB300S (Silicone)



DURA PRODUCTS AG CHEMICAL CHART

COMPOUND	EPDM	Viton®	Silicone
2,4-D Ester		●	
Accord® / Accord® XRT II	●	●	●
Acuron®	●		
Ammonium Sulfate	●	●	●
Atrazine	●	●	
Balance® Flexx	●	●	
Boundary®		●	
Callisto® 480SC	●		
Capreno®	●	●	
Corvus®	●	●	
Degree Xtra®	●	●	
Dicamba / Xtendimax®	●		
DiFlexx® Duo	●	●	
Duramax® / Durango®	●	●	●
Engenia®	●		
Enlist Duo®	●	●	●
EverGol®	●	●	
Foliars		●	
ForeFront®	●		
FulTime® NXT		●	
Fungicides		●	
Garlon® 3A	●		●
Gaucho® 600	●	●	
Gramoxone® / Paraquat		●	
Grazon® P+D / GrazonNext	●		
Halex® GT	●		
Huskie®		●	
Instinct®			●

COMPOUND	EPDM	Viton®	Silicone
Intimidator®	●		●
Keystone® / Keystone® LA			●
Laudis®	●	●	
Lexar® EZ / Lumax® EZ	●		
Liberty®	●		
Lorsban® 4E / Lorsban® Advanced		●	
Matador®	●		●
Max-In® Ultra ZMB	●	●	
MSO / Crop Oil / Oil Based		●	
Nitrogen Based		●	
N-Serve® 24		●	
Parity™		●	
Prosaro®	●	●	
Prowl® / Pendimethalin		●	
Raxil® PRO	●	●	
Rely® 280	●	●	
Resicore®			●
Roundup®	●	●	
Shredder™ E-99		●	
Stratego® / Stratego® YLD	●		
Stylet-Oil		●	
SureStart® / SureStart® II			●
Surpass® EC	●		●
Tacoma®		●	
TopNotch®	●		
Tordon® 22k	●		
Warrant®		●	
Wolverine® Advanced		●	

The Dura Products Chemical Compatibility Chart **should be considered as a guide only** due to the many variables which may affect the compatibility of materials. This guide is based on the most recent information obtained from a variety of suppliers and chemical producers and is believed to be accurate. Actual decisions on materials used need to be tested and evaluated by the customer for each specific application. The responsibility of proper chemical compatibility of equipment and material used is the full responsibility of the customer. Dura Products does not warrant product damaged by non compatibility.

For help with the proper selection of a pump for your application needs, please call (855) 502-3872.



DURA PRODUCTS
 Technology with Lasting Value
www.DuraProducts.com
 Arcadia, IN 46030 | (855) 502-3872





DURA PRODUCTS DURA-ABV System

ORDERING INFORMATION

PRODUCT #	DESCRIPTION
DURA-ABV-B	Dura-ABV™ Auto-Batch Meter w/Banjo Connector
Banjo EVX100B (NPT) QR	Banjo EVX® Electric Valve w/National Pipe Thread QR
Banjo MEVX100B (MAN)	Banjo MEVX® Electric Valve w/Manifold
Banjo 1" Poly Nipple (NPT) QR	Dura-ABV™ EVX® Connector Kit with National Pipe Thread QR
DP-ABV MEVX CONNECTOR KIT (MAN)	Dura-ABV™ MEVX® Connector Kit w/ Manifold

Always turn pump off and disconnect system from power when not in use.

Never leave unattended while in use.

How It Works

- 1 Select the volume desired
- 2 Press START
- 3 Banjo EVX® Valve will open, fluid is measured and valve automatically closes upon completion

Video available at
www.DuraProducts.com/videos

SIMPLE

Join factory installed electric connectors

Plumb valve to Auto-Batch

Select volume desired

Press START

Banjo EVX® Valve will open, fluid is measured and valve automatically closes upon completion

SMART

/ Eliminates operator error and herbicide exposure

/ Real-time valve LED performance feedback

/ Inventory management

/ Female NPT and manifold flange connections offer plumbing options

/ Ability to save up to five calibrations and measure in gallons, liters and ounces

ECONOMICAL

/ Consists of a Dura-ABV™ and Banjo EVX® Valve

/ No sophisticated wiring, PLC or plumbing

/ Multiple units can be used in manifold application

/ Ideally suited with venturi driven chemical handling system



2" & 3" HIGH-FLOW DURA-METER

DP-HFM2* or DP-HFM3*

*E-EPDM V-Viton S-Silicone

- Intuitive menu-driven backlit display
- Impact resistant Lexan™ faceplate
- 100% moisture-sealed circuitry
- 2" M220 flange, 3" M300 flange manifold meter body
- Includes 2-year Warranty & Maintenance Program
- Easy to service
- Extended battery life with (2) 9v batteries
- Fluid flow begins measurements
- Versatile plumbing configurations
- Displays batch and total volume
- Flow rate measurements done in gallons/liters
- Proper calibrations can remove need to have 7" straight inlet and 7" straight outlet (can be done in the field)

SPECIFICATIONS:

- GPM: 2": 15-300, 3": 15-700
- Accuracy: +/-0.5%
- Battery Life Indicator: Yes
- Temperature Range: +32 °F to +140 °F
- Meter type/Style: Paddlewheel



2" High-Flow Dura-Meter™



3" High-Flow Dura-Meter™

DURA PRODUCTS
Technology with Lasting Value
www.DuraProducts.com
Arcadia, IN 46030 | (317) 984-4003





Digital Flow Meters



**1" Full Port
Flow Meter
110 GPM**
FM100



**2" Full Port
Manifold Flow
Meter 300
GPM**
MFM220



**3" Full Port
Manifold Flow
Meter 670 GPM**
MFM300

BANJO Flow Meters

- Displays overall total volume & batch total volume
- Flow rate allows for Gallons or Liters Per Minute
- The display reads 6 digits for Rate, 8 digits for Total and 1 decimal place reading in tenths
- Magnetic style meter with stainless steel electrodes
- Self calibrating meter
- Measures water and most conductive liquids
- Easy to change six (6) AA batteries
- No moving parts to fail during use
- Glass-reinforced polypropylene
- Temperature range from 0°F to 150°F
- Accuracy is 99% from 2 to 110 GPM for 1"
- Accuracy is 99% from 30 to 300 GPM for 2"
- There are 3 photoeyes located on the face of the flow-meter

Note: These are not push buttons, to activate you must hold your finger over the photoeye for 2-4 seconds.

1" Tuthill In-line Digital Turbine Meter

TT10PN

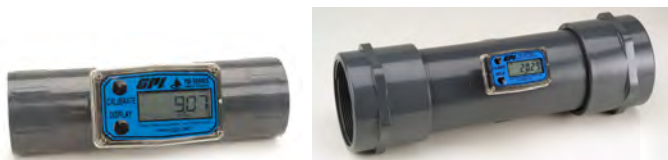


- Accurate within 1%
- Easy to use
- It has factory presets for 18 fluids including non-potable water and chemicals.
- It has more safety approvals than any other meter in its class.
- Uses replaceable AA batteries for operation
- Has a protective rubber boot which absorbs impact and minimizes meter and electronic damage in harsh environments
- Offers corrosion resistance and protection in frigid temperatures and extreme heat (-40° to 176°)
- Can measure in ounces, pints, gallons, liters, and quarts
- Flow rate range(GPM) is 2-35 GPM
- Max operatin pressure is 50 PSI.

GPI Water Meter

Part #	INLET & OUTLET	METER SIZE	FLOW MIN GPM	FLOW MAX GPM
TM20Q9GMB	2" NPT Female	2"	20	200
TM30NQ9GMD	3"NPT Female	3"	40	400

- Turbine Style
- Housing Material: PVC
- Design: Water Meter (Up to 225 PSI)
- 2-Year Battery Powered, 6 Digit Display- Floating Decimal, Rate of Flow, Batch & Cumulative Totals, Factory Calibrated and Field Calibratable, User configurable for Unit of Measure-GPM, LPM and more
- Custom Programmable Display (including UOM)
- Unidirectional flow, display can be rotated 180 degrees(can mount Horizontally or Veritcally)
- Can use on Gravity Feed systems
- Accuracy can be improvised with field calibration-Line must be full (no air) for proper accuracy
- DO NOT ALLOW FLUID TO FREEZE INSIDE THE METER





Hydraulic Centrifugal Pumps



9202C



9203C



9205C



9206C

PART#	DESCRIPTION	GPM	PSI	RPM	INLET	OUTLET	SHAFT
9202C	Centrifugal Pump - Pedestal	105	170	6000	1 1/4"	1"	5/8"
9203C	Centrifugal Pump - Pedestal	140	170	6000	1 1/2"	1 1/4"	5/8"
9203C-R	Centrifugal Pump - Pedestal	140	170	6000	1 1/2"	1 1/4"	5/8"
9205C	Centrifugal Pump - Pedestal	180	190	4200	2"	1 1/2"	7/8"
9206C	Centrifugal Pump - Pedestal	225	80	4200	2"	1 1/2"	5/8"
3430-0332	Seal and O-Ring Repair Kit						
3430-0537	Seal and O-Ring Repair Kit (9205 Models)						
3430-0589	Life Guard © Silicon Carbide Seal Kit						
3430-0646	Life Guard © Silicon Carbide Seal Kit (9205 Models)						

Pedestal Mount Centrifugal Pumps



9302C



9303C



9305C



9306C



9207C

PART#	DESCRIPTION	GPM	PSI	INLET	OUTLET
9302CT-GM1	2-3 GPM; Open/Closed Center System	63	105	1 1/4"	1"
9302C-HM1C	13 GPM; Open/Closed Center System	72	150	1 1/4"	1"
9302C-HM2C	6 GPM; Open/Closed Center System	65	96	1 1/4"	1"
9302C-HM4C	7 GPM; Open/Closed Center System	72	120	1 1/4"	1"
9303C-HM1C	13 GPM; Open/Closed Center System	114	130	1 1/2"	1 1/4"
9303C-HM2C	6 GPM; Closed Center System	97	95	1 1/2"	1 1/4"
9303C-HM3C	24 GPM; Large Open Center System	125	98	1 1/2"	1 1/4"
9303C-HM4C	7 GPM; Open/Closed Center System	115	93	1 1/2"	1 1/4"
9303C-HM5C	16 GPM; Open/Closed Center System	147	145	1 1/2"	1 1/4"
9305C-HM3C	19 GPM; Large Open Center System	182	160	2"	1 1/2"
9306C-HM1C	13 GPM; Open/Closed Center System	207	130	2"	1 1/2"
9306C-HM3C	24 GPM; Open/Closed Center System	214	135	2"	1 1/2"
9306C-HM5C	17 GPM; Open/Closed Center System	212	140	2"	1 1/2"
9307C-GM10	20 GPM; Open/Closed Center System - Silicon Carbide Seal	358	135	3"	2"
3430-0332	Seal & O-Ring Repair Kit				
3430-0500	Seal & O-Ring Repair Kit (9305 Models)				
3430-0589	Life Guard Silicon Carbide Seal Kit (9302 & 9303 Models)				
3430-0601	Life Guard Silicon Carbide Seal Kit (9305 Models)				





Gear-Driven Centrifugal Pumps



PART#	GPM	PSI	RPM	PTO OUTPUT
9006C-O	117	78	600	1 3/8" 540 RPM Female
9008C-O	110	75	1000	1 3/8" 1000 RPM Female
9016C-O	117	78	600	1" Solid Shaft
9018C-O	110	75	1000	1" Solid Shaft
9028C-O	110	75	1000	1 3/4" 1000 RPM Female



Diaphragm Pumps



DP-43-P



AR252-SP/SGC



DP-90.1



AR30-SP



AR70BP-SP

VENDOR	MODEL #	# OF DIAPHRAGMS	MAX GPM	PSI	MAX RPM	INLET	OUTLET
John Blue	DP-43	2	4.3	290	650	3/4" HB	1/2" NPT
AR North America	AR252	2	6.5	362	650	3/4" HB	1/2" NPT
John Blue	DP-70	2	7.1	290	650	1" HB	3/4" NPT
John Blue	DP-90.1	3	9.0	580	650	1" HB	1/2" NPT
AR North America	AR30	2	9.6	580	550	1" HB	1/2" HB
AR North America	AR45	3	11.4	290	550	1-1/4" HB	1" HB
AR North America	AR60	3	15.6	290	550	1-1/2" HB	1" HB
AR North America	AR70	2	19.6	290	550	1-1/4" HB	1" HB
AR North America	AR120	3	30.8	220	550	1-1/2" HB	1" HB

**Drive Options Available In: Gas Engine Driven, PTO Shaft Driven, Hydraulic Driven, Electric Motor Driven, and Ground Driven



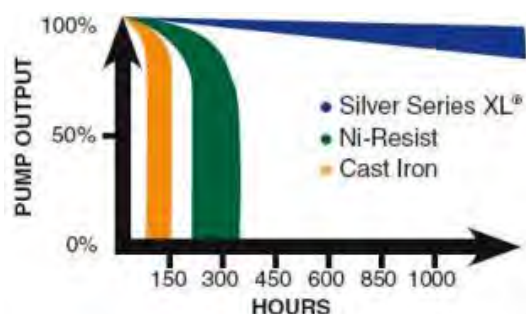


Roller Pumps



VENDOR	PART #	# OF ROLLERS	GPM	PSI	MAX RPM	SHAFT OUTPUT
HYPRO	4101C*	4	7.2	150	2600	5/8" SOLID SHAFT
HYPRO	4101C-H*	4	7.2	150	2600	1/2" HOLLOW SHAFT
HYPRO	4001C*	4	9.1	150	1800	5/8" SOLID SHAFT
HYPRO	4001C-H*	4	9.1	150	1800	1/2" HOLLOW SHAFT
HYPRO	1700C*	5	45	200	1000	15/16" SOLID SHAFT
HYPRO	6500C*	6	21.8	300	1200	5/8" SOLID SHAFT
ACE	15050	6	21.8	300	1200	5/8" SOLID SHAFT
HYPRO	1502C*	6	62	200	1000	15/16" SOLID SHAFT
HYPRO	7700C*	7	22.1	200	800	15/16" SOLID SHAFT
HYPRO	7560C*	8	22.5	300	1200	15/16" SOLID SHAFT
ACE	15000	8	22.5	300	1000	15/16" SOLID SHAFT

*Housing available in Cast Iron (C), Ni-Resist (N), or Silver Series XL® (XL)



Hypro roller pumps are the number one all-around choice by farmers throughout the world. The rollers (from 4 to 8, depending on the model) revolve inside the pump housing to force the spray solution through the outlet to the nozzle. Roller pumps have a low initial cost and are extremely versatile. They operate efficiently at PTO speeds of 540 and 1000 rpm and have a wide pressure range of up to 300 psi and flow rates of 2 to 74 gpm. Roller pumps are self priming and easily adapt to PTO or gas engine drives. Specific seal, roller and casting materials can be selected for compatibility with certain herbicides, pesticides, fungicides and fertilizers.

- Housing available in Cast Iron (C), Ni-Resist (N), or Silver Series XL® (XL)
- Ni-Resist is a high nickel content alloy for better corrosion resistance
- Silver Series XL® has a custom alloy that provides the best corrosion resistance and is Ready for use with Roundup®

With a compact, low cost design, the Ace roller pump offers quality construction with a proven design for a large range of spraying, cleaning, and transfer applications. Whether used for low volume, moderate pressure applications such as field or row crops, or for spot spraying around storage bins and fence rows, the Ace roller pump delivers sufficient pressure for reaching the top of orchard trees or penetrating live-stock hair.

Standard features include:
Cast-Iron construction
Thermoplastic with metal core rollers allow for applying products up to 140°F (60°C)
FKM lip type seals
Sealed bearings for longer life





Roller Pump Accessories

Pump Quick Couplers



PART#	MATERIAL	PTO	PUMP END	RPM	PUMP MODEL
1321-0006	Die Cast	1 3/8"	5/8"	540	6500
1323-0074	Forged Steel	1 3/8"	5/8"	540	6500
1321-0007	Die Cast	1 3/8"	15/16"	540	1500, 1700, 7560, 7700
1323-0072	Forged Steel	1 3/8"	15/16"	540	1500, 1700, 7560, 7700
1321-0009	Die Cast	1 3/8"	15/16"	1000	1500, 1700, 7560
1323-0073	Forged Steel	1 3/8"	15/16"	1000	1500, 1700, 7560
14880	Die Cast	1 3/8"	5/8"	540/1000	RP600
1321-0012	Die Cast	1 3/8"	5/8"	540/1000	4000, 6500
1323-0077	Forged Steel	1 3/8"	5/8"	540/1000	4000, 6500
1323-0075	Forged Steel	1 3/8"	5/8"	1000	4000, 6500
1321-0013	Die Cast	1 3/8"	15/16"	540/1000	1500, 1700, 7560, 7700
1323-0076	Forged Steel	1 3/8"	15/16"	540/1000	1500, 1700, 7560, 7700
14830	Die Cast	1 3/8"	15/16"	540/1000	RP800

Roller & Rotor Repair Kits

VENDOR	PART#	DESCRIPTION	PUMP MODEL
Hypro	2000-0010	Bearing, 4 & 6 Roller	4001, 4101, 6500
Hypro	2008-0001	Bearing, 5, 7 & 8 Roller	1502, 1700, 7560, 7700
Hypro	3430-0581	4 Super Rollers, 2 O-Ring Gaskets (Round & Square), 2 Viton Seals	1200, 4001, 4101
Hypro	3430-0582	6 Super Rollers, 2 O-Ring Gaskets (Round & Square), 2 Viton Seals	1500, 1700, 6500
Hypro	3430-0583	8 Super Rollers, 2 O-Ring Gaskets (Round & Square), 2 Viton Seals	7560, 7700
Hypro	1005-0002	1/2" Roller	4001, 4101
Hypro	1005-0004	11/16" Roller	6500, 7560, 7700
Hypro	2107-0002	Viton Shaft Seal, 4 & 6 Roller	4001, 4101, 6500
Hypro	2112-0003	Viton Shaft Seal, 5, 7 & 8 Roller	1502, 1700, 7560, 7700
Ace	14975	Universal 6 roller repair kit- seals, o-rings, and rollers	15050
Ace	14950	Universal 8 roller repair kit- seals, o-rings, and rollers	15000

Torque Bar Kits



Hypro Torque Arm Kit
3430-0540



Ace Torque Bar Kit
15100





Diaphragm Pumps



PART#	GPM	SWITCH	PSI	VALVES	DIAPHRAGM	PORTS	VOLTAGE	CONNECTOR
2240-1B1-10E	1.0	Demand	40	Viton	Santoprene	3/8" Barb	12 VDC	2-Pin
3321-2E1-82A	1.2	Bypass	60	Viton	Santoprene	3/8" FNPT	12 VDC	Bare Leads
3323-1E1-82B	2.2	Demand	60	Viton	Santoprene	3/8" FNPT	12 VDC	2-Pin
3214-1E1-82B	3.2	Demand	60	Viton	Santoprene	3/4" QA	12 VDC	2-Pin
5534-1E1-82B	3.0	Demand	60	Viton	Santoprene	1/2" FNPT	12 VDC	2-Pin
5536-1E1-82B	4.0	Demand	60	Viton	Santoprene	1/2" FNPT	12VDC	2-Pin
5517-1E1-82B	5.3	Demand	60	Viton	Santoprene	3/4" QA	12VDC	2-Pin
5537-1E1-82B	5.3	Demand	60	Viton	Santoprene	1/2" FNPT	12VDC	2-Pin
5517-2E1-603	5.3	Bypass	60	Viton	Santoprene	3/4" QA	12VDC	Weather Pac
5517-2E1-604	5.3	Bypass	60	Viton	Santoprene	3/4"QA	12VDC	M/P 480
5537-1E1-58C	5.3	Demand	60	Viton	Santoprene	1/2" FNPT	115 VAC	Plug-In
5538-1E1-94A	7.0	Demand	60	Viton	Santoprene	1/2" FNPT	12 VDC	Bare Leads

ProFlo 3/4" Quick Attach Fittings



PART#	SIZE	FITTING TYPE	MATERIAL
FQ5S-38	3/4" QA x 3/8"	HB Straight Fitting w/ O-Ring	Poly
FQ5S-12	3/4" QA x 1/2"	HB Straight Fitting w/ O-Ring	Poly
FQ5S-34	3/4" QA x 3/4"	HB Straight Fitting w/ O-Ring	Poly
FQ5E-38	3/4" QA x 3/8"	HB Elbow Fitting w/ O-Ring	Poly
FQ5E-12	3/4" QA x 1/2"	HB Elbow Fitting w/ O-Ring	Poly
FQ5E-34	3/4" QA x 3/4"	HB Elbow Fitting w/ O-Ring	Poly
FQ5S-12B	3/4" QA x 1/2"	HB Straight Fitting w/ O-Ring	Black Nylon
FQ5E-12B	3/4" QA x 1/2"	HB Elbow Fitting w/ O-Ring	Black Nylon
QTS-556	3/4" QA x 1/2"	MNPT Straight w/ O-Ring	Black Nylon
FQ5ME-12	3/4" QA x 1/2"	MNPT Elbow w/ O-Ring	Black Nylon



Remco ProFlo Sprayer Manifold



PART#	SERIES	GPM	DESCRIPTION
RM-33C-R	3300	1.2-2.2 GPM	Quick Attach Manifold - 3/4" Ports, 2 Ball Valves, 1/4" Gauge Port, 1/2" Auxillary Port
RM-55C-R	3200/5500	3.2-5.3 GPM	Quick Attach Manifold - 3/4" Ports, 2 Ball Valves, 1/4" Gauge Port, 1/2" Auxillary Port
RM-35C-K	3200/3300/5500	1.2-5.3 GPM	Quick Attach Manifold - 3/4" Ports, 2 Ball Valves, 1/4" Gauge Port, 1/2" Auxillary Port, 1 set of 3300 manifold legs & 1 set of 3200/5500 manifold legs, Quick Attach Fittings and Adapter Plate

Remco Pump Filters



PART#	INTLET	OUTLET	MESH SIZE
10541	1/2" Hose Barb	3/4" Male Quick Attach	50
R-309T153	1/2" Hose Barb	3/8" MNPT	50
R-309T253	1/2" Hose Barb	1/2" MBSP	50
R-309TA53	1/2" Hose Barb	5/8" Male Quick Attach	50
R-309TB53	1/2" Hose Barb	3/4" Male Quick Attach	50
SS10422T	50 Mesh	1/2" FNPT	50



Diaphragm Pumps

PART#	GPM	SWITCH	PSI	VALVES	DIAPHRAGM	PORTS	VOLTAGE	CONNECTOR
8000-533-236	1.4	Demand	60	Viton	Santoprene	3/8" FNPT	115 VAC	Plug-In
8000-543-236	1.8	Demand	50	Viton	Santoprene	3/8" FNPT	12 VDC	Bare Leads
8000-543-250	1.8	Bypass	45	Viton	Santoprene	3/8" FNPT	12 VDC	Bare Leads
8007-543-836	1.8	Demand	50	Viton	Santoprene	3/8" FNPT	12 VDC	2-Pin
8007-543-850	1.8	Bypass	50	Viton	Santoprene	3/8" FNPT	12 VDC	2-Pin
2087-593-135	3	Demand	50	Viton	Santoprene	1/2" MSPT	12 VDC	2-Pin
2088-343-135	3	Demand	40	Viton	Santoprene	1/2" MSPT	12 VDC	Bare Leads
2088-394-144	3	Demand	40	Viton	Santoprene	1/2" MSPT	115 VAC	Plug-In
2088-313-445	3.6	Demand	45	Viton	Santoprene	1/2" MSPT	12 VDC	Bare Leads
5059-1310-D011	5.3	Bypass	90	Viton	Santoprene	1/2" FNPT	12 VDC	Bare Leads
5059-1311-D011	5.3	Bypass	90	Viton	Santoprene	1/2" MNPT	12 VDC	Bare Leads
5059-3610-D011	5.3	Demand	60	Viton	Santoprene	1/2" FNPT	12 VDC	Bare Leads
5059-3611-D011	5.3	Demand	60	Viton	Santoprene	1/2" MNPT	12 VDC	Bare Leads



5059-3610-D011



**Self-Priming
Premium Demand Pump
Fin Cooled Motor**

2088-313-445



8000-533-236

Shurflo Swivel Wingnut Fittings

Straight Poly Fittings

PART#	FSPT	HB
234-2916	1/2"	3/8"
234-2926	1/2"	1/2"
234-2936	1/2"	5/8"
234-2946	1/2"	3/4"



Elbow Poly Fittings

PART#	FSPT	HB
234-3916	1/2"	3/8"
234-3926	1/2"	1/2"
234-3936	1/2"	5/8"
234-3946	1/2"	3/4"



Power Twin Diaphragm Pump

Take all the performance and features of the time tested 2088 series, double it, and the result is the high flow Power Twin. Delivers an open flow of 6.25 GPM (23.6 l/min) at a mere 9.8 amps. At 40 PSI (2.8 bar) it delivers 3.5 GPM (13.2 l/min) and draws only 17.2 amps. One of the most efficient high flow self-priming pumps available today, the Power Twin is excellent for transferring, spraying, and use as a 1:1 proportioning pump.

Part # 4111-035

Without Manifold

Part # 4211-035

